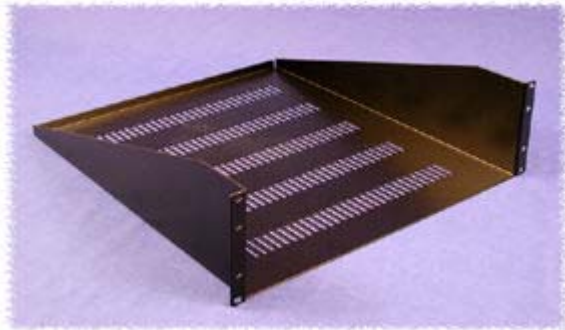
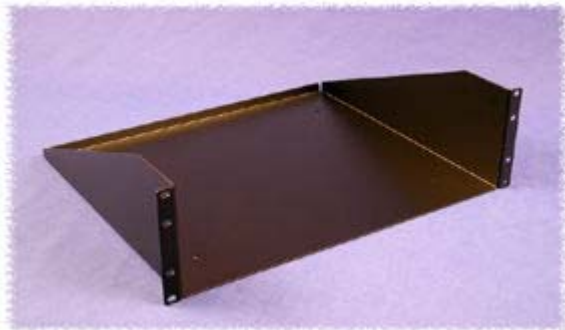


## Shelves (Fixed) - Panel Mount (Single Pair of Panel Rails)

**Path:** [Home](#) > [Rack Index](#) > Shelves (Fixed) - Panel Mount



**Vented**  
(20" Deep - 3U Shown)



**Unvented**  
(15" Deep - 3U Shown)

### Panel Rail Mounted Fixed Chassis/Shelf (Vented or Unvented)

- Shelves feature formed 14-gauge steel construction
- Choice of four heights - 1.75"(1U), 3.5"(2U), 5.25"(3U) or 7"(4U) of panel space
- Rear lip folded up for extra strength & acts as a rear equipment retainer
- Weight load tested: (1U-40 pounds, 2U-100 pounds, 3U & 4U-200 pounds)
- Mounts to front rail either as an internal shelf or external shelf/work area
- Choice of two depths - 15" or 20"
- Available in either vented or unvented versions
- Rugged powder paint finish
- Requires mounting [hardware](#)



Assembly  
Instructions

## VENTED

Part Number	Color	Paint Texture	Panel Height		Drawing File Size	.zip File Size	Panel Width	Shelf Depth	
			Inches	Units					
<b>19" Rack Mount</b>									
<b>RASV190115BK1</b>	Black	Textured	<b>1.75</b>	1	63K	57K	<b>19"</b>	15"	
<b>RASV190120BK1</b>	Black	Textured	<b>1.75</b>	1	73K	68K	<b>19"</b>	20"	
<b>RASV190315BK1</b>	Black	Textured	<b>3.50</b>	2	66K	57K	<b>19"</b>	15"	
<b>RASV190320BK1</b>	Black	Textured	<b>3.50</b>	2	73K	68K	<b>19"</b>	20"	
<b>RASV190515BK1</b>	Black	Textured	<b>5.25</b>	3	35K	54K	<b>19"</b>	15"	
<b>RASV190515CG1</b>	Grey/Beige	Textured							

## Adjustable Shelf

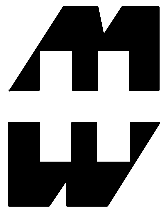


Assembly  
Instructions

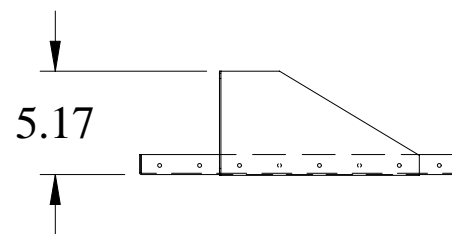
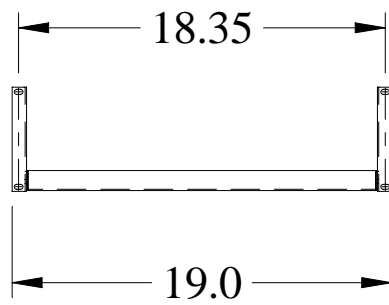
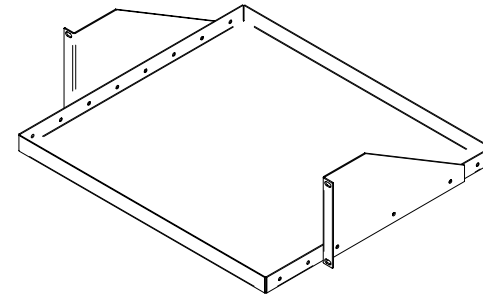
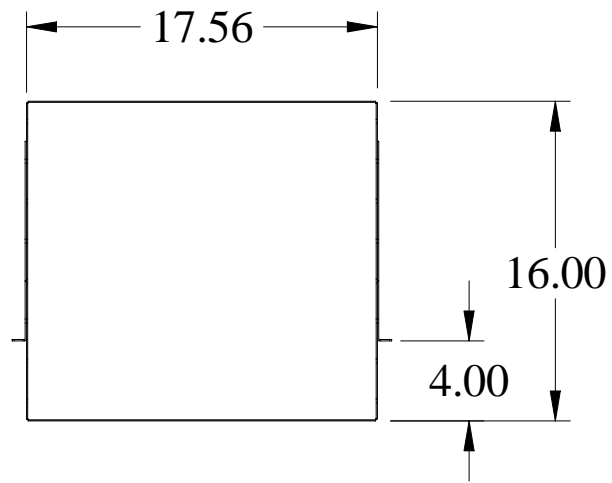
- Mounts to panel rails using 5.25" (3U) of vertical panel space
- Movable side brackets allow mounting inside or outside rack at 4 different depths
- Designed mainly for open relay racks - works panel mounted on any rack
- Choice of 16" or 20" deep
- Available in either 19" or 23" rack panel width
- 14 Ga. steel construction
- Weight load tested (DNRMA2320BK1) to 275 pounds
- Finished in rugged black textured powder paint
- Requires mounting **hardware**

Part Number	Color		Drawing File Size		.zip File Size	Panel Width	Shelf Depth
<b>19" Rack Mount</b>							
<b>DNRMA1916BK1</b>	Black		14K		17K	<b>19"</b>	16"
<b>DNRMA1920BK1</b>	Black		15K		18K	<b>19"</b>	20"
<b>23" Rack Mount</b>							
<b>DNRMA2316BK1</b>	Black		14K		17K	<b>23"</b>	16"
<b>DNRMA2320BK1</b>	Black		15K		18K	<b>23"</b>	20"

**Note:** Weight load tested (DNRMA2320BK1) to 275 pounds.



PART No. DNRMA1916



# Shelves & Slides - Panel Mount

## RAIL MOUNT KEYBOARD/MONITOR SHELF

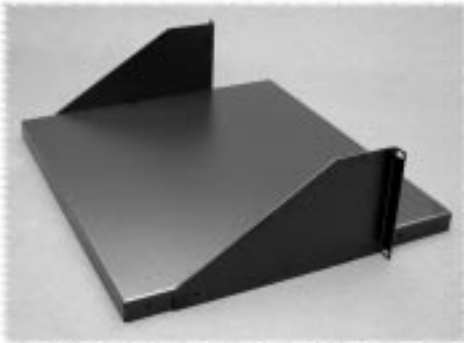


- Standard 19" rack mount
- Mounts to panel rails using 5.25" (3U) of vertical panel space
- Extends 15" back from front panel
- Slanted keyboard section is 8.5"
- Rear lip to reduce chance of monitor being pushed off rear of shelf
- Available in either 19" or 23" rack panel width
- 14 Ga. steel construction
- Weight load tested to 160 pounds
- Finished in rugged black textured powder paint
- Requires mounting hardware



Part Number	Panel Width
<a href="#">RKBM19BK1</a>	19"
<a href="#">RKBM23BK1</a>	23"

## ADJUSTABLE SHELF



- Standard 19" rack mount
- Mounts to panel rails using 5.25" (3U) of vertical panel space
- Separate, reversible side brackets for maximum flexibility (allows shelf to extend inside or outside the rack)
- 4 different depth settings (depending on location of side brackets)
- 14 Ga. steel construction, finished in rugged black textured powder paint
- Requires mounting hardware

Part Number	Panel Width	Shelf Depth
<a href="#">DNRMA1916BK1</a>	19"	16"
<a href="#">DNRMA1920BK1</a>	19"	20"
<a href="#">DNRMA2316BK1</a>	23"	16"
<a href="#">DNRMA2320BK1</a>	23"	20"

## RAIL MOUNT EQUIPMENT SHELF



- Standard 19" rack mount
- A closed shelf with 1.5" dia. holes in each bottom corner for cord access
- Fabricated from 18 gauge steel
- Inside dimensions 17.2" wide x 15" deep
- Weight load tested to 75 pounds
- Opening height is only 1" less than panel height
- Finished in white (to aid visibility), powder paint
- Requires mounting hardware

Part Number	Panel Height
<b>White Smooth</b>	
<a href="#">RASE1900815WH2</a>	8.75"
<a href="#">RASE1901015WH2</a>	10.50"
<a href="#">RASE1901215WH2</a>	12.25"